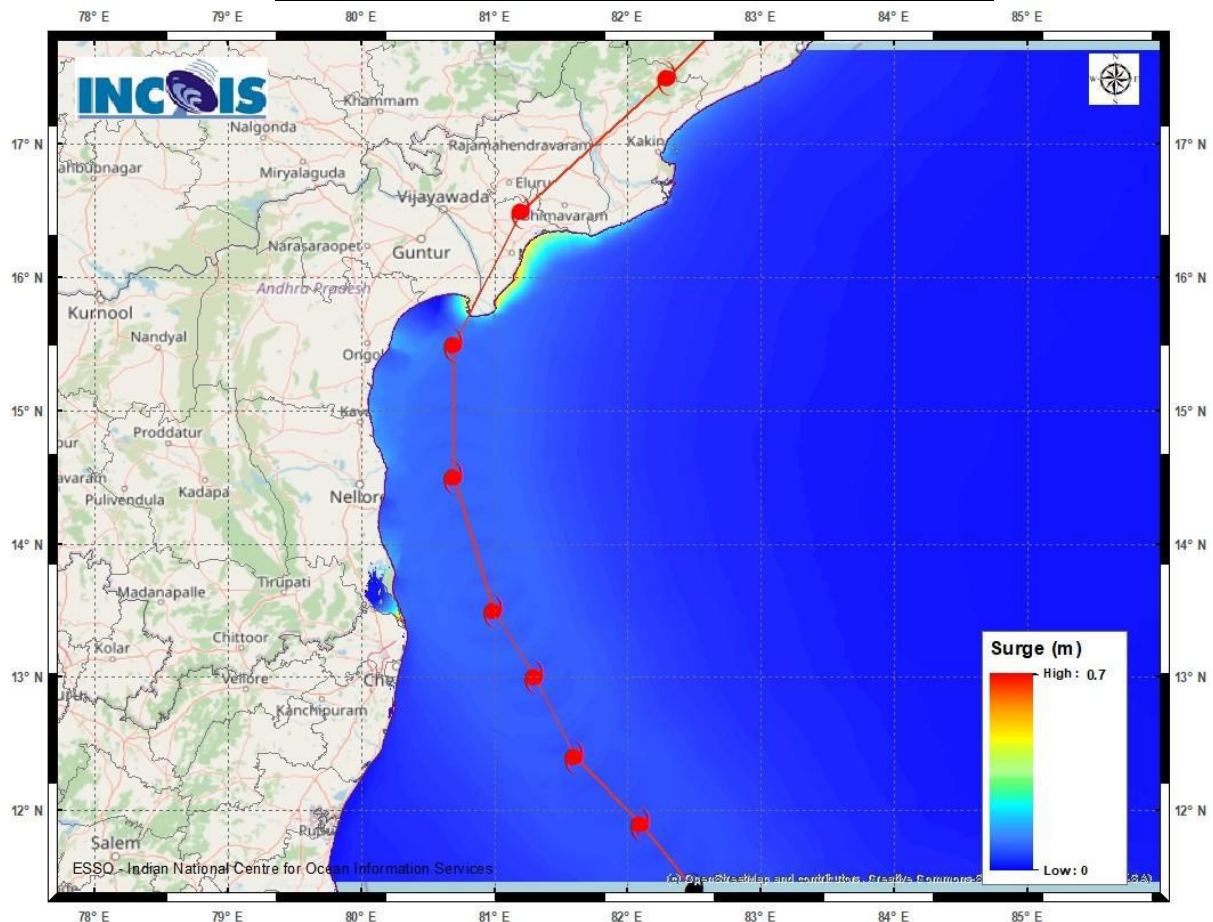


STORM SURGE GUIDANCE BASED ON 0300UTC OF 3rd DECEMBER, 2023

STORM SURGE GUIDANCE FOR INDIA:

Storm surge of about 1-1.5 meter above astronomical tide likely to inundate south Coastal Andhra Pradesh districts at the time of landfall.

Storm Surge Warning Graphics based on Forecast Track



STORM SURGE HEIGHT INFORMATION:

* The below listed surge heights are over and above astronomical tide.

MANDAL/TALUK	DISTRICT	STATE/UNION TERRITORY	NEAREST PLACE OF HABITATION	STORM SURGE (m)	EXPECTED INUNDATION EXTENT (km)
Avanigadda	Krishna	Andhra Pradesh	Ramakrishnapuram	0.2-0.7	Upto 0.16
Machilipatnam	Krishna	Andhra Pradesh	Perupalem	0.3-0.7	Upto 0.17
Ponneri	Thiruvallur	Tamil Nadu	Karimanal	0.2-0.6	Upto 0.15
Repalle	Guntur	Andhra Pradesh	Repalle	0.3-0.5	Upto 0.25